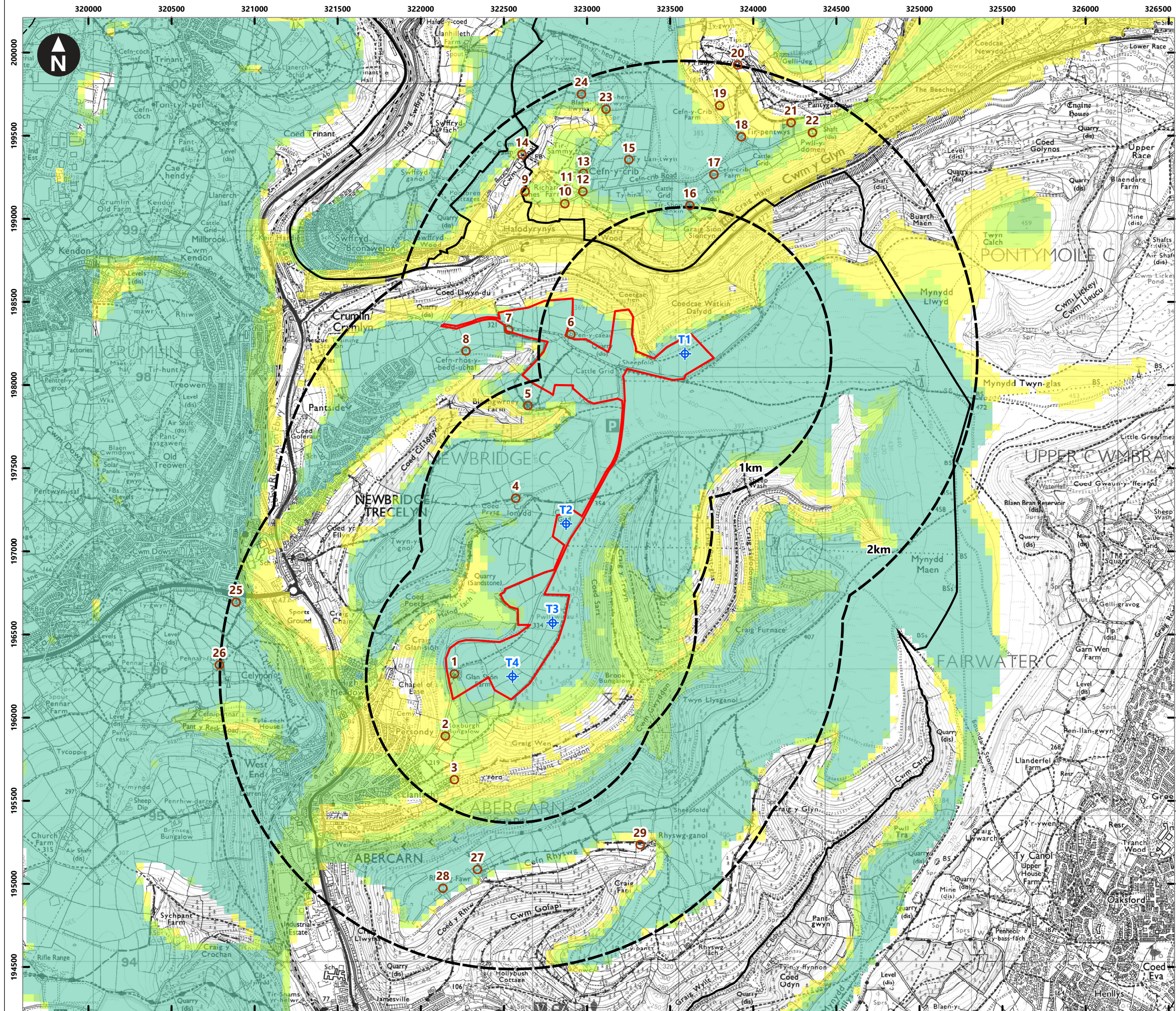


C:\Users\UKCLB775\OneDrive - WSP\0365\Temp\Windfarm\Trecelyn\ArcGIS\2023-06 Design Freeze\MXD\Fig 6.17 RVAA 62281426-WSP-FG-OL-00034_R1.mxd Originator: UKCLB775



Key

- Proposed Turbine Locations
- Site Boundary
- Lines indicating the distance from the proposed turbines
- Local authority boundaries
- 1 turbines may be theoretically visible
- 2 turbines may be theoretically visible
- 3 turbines may be theoretically visible
- 4 turbines may be theoretically visible
- Residential Property

- 1) Glan Shon Farm
- 2) Roxburgh Bungalow
- 3) Graig Wen Houses (east of Abercarn)
- 4) Cil-lonydd
- 5) Blaengwrney Farm
- 6) Pen-y-caeau Farm
- 7) Cefn Gawni (Blaengwrney Farm)
- 8) Cefn-rhos-y-bedd-uchaf
- 9) Hillcrest Bungalow
- 10) Rhiw Cottages
- 11) Ton Cottage, Cefn Y Crib + annex
- 12) Ty Mawr Cottage
- 13) Tram Road Cottage
- 14) Cwm Farm, Pontbren Road
- 15) Ty Lan-Twyn
- 16) Tir-Shon-Shenkin
- 17) Cefn-Crib Farm
- 18) Bwthyn Yr Ysgol
- 19) Cefn Y Crib Farm
- 20) Ty Mary-Harry
- 21) Tirpentwys Farm
- 22) Pwll-Y-Domen Farm
- 23) Ty'-r-hen-forwyn
- 24) Blaen-llwynau
- 25) Penrhiwbicca
- 26) Pennar-fach
- 27) Stabal To Carreg
- 28) Cefn Rhyswg Farm
- 29) Rhyswg-Ganol

0 0.2 0.4 0.6 0.8 1 1.2 1.4 km
Scale at A3:1:25,000
© Crown copyright and database rights [2021]
Ordnance Survey 0100031673

Trecelyn Wind Farm
Landscape and Visual Impact Assessment

Figure 6.17
Residential Properties within 2km with
Zone of Theoretical Visibility (ZTV) to
Blade Tip