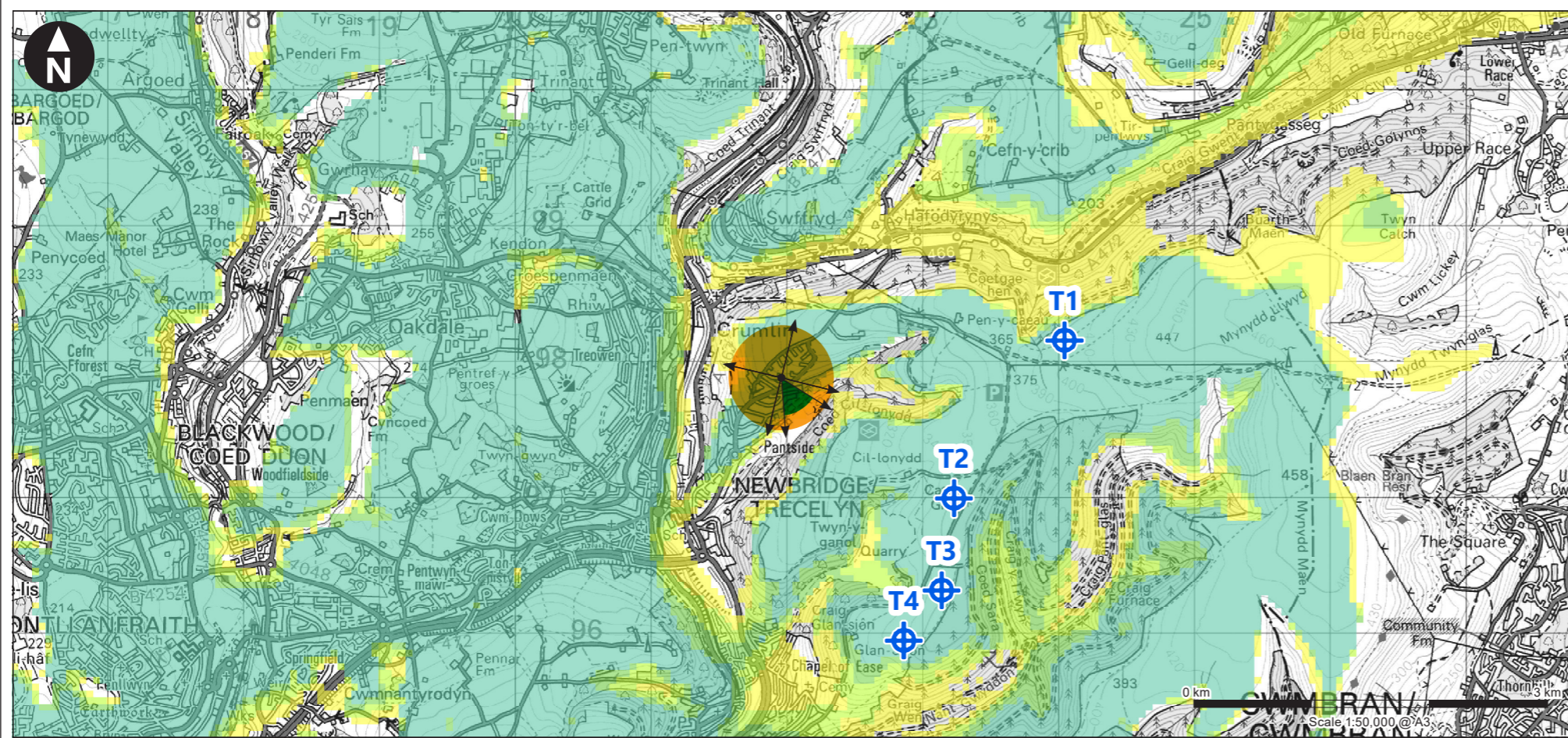
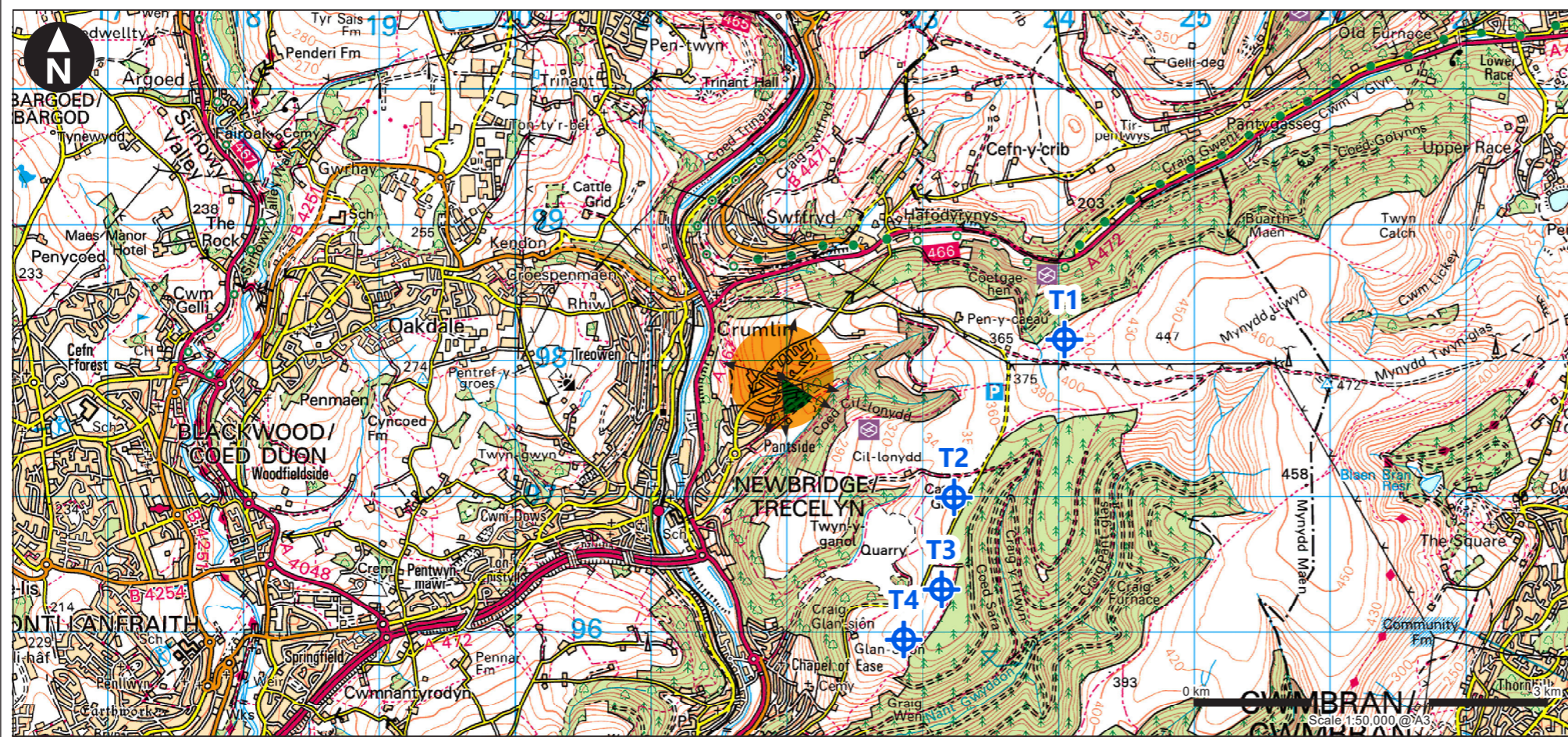


C:\Users\UKCLB775\OneDrive - WSP\O365\Temp\Windfarm\Trecelyn\Design\VP2 Old Pant Road 807379-WOOD-FG-OL-00037_R1.indd Originator: brycc



Field of View	1 blade tip may be visible	2 blade tips may be visible	3 blade tips may be visible	4 blade tips may be visible
90° horizontal field of view	1 blade tip may be visible	2 blade tips may be visible	3 blade tips may be visible	4 blade tips may be visible
53.5° horizontal field of view				

Viewpoint Parameters

OS reference:	E321 975, N197 866
Ground Level Elevation:	240m AOD
Camera Height:	1.5m AGL
Direction of view to site centre ³ :	124°
Distance to nearest turbine:	1,523m
Number of blade tips theoretically visible ⁴ :	4
Number of hubs theoretically visible ⁴ :	4
Date and time of viewpoint photography:	04/05/2023 @ 11:26
Camera:	Canon EOS 5D Mark II
Lens:	50mm (Canon 50mm f/1.2 GM)

Information on the limitations of visualisations:

Visualisations of wind farms have a number of limitations which you should be aware of when using them to form a judgement on a wind farm proposal. These include:

- A visualisation can never show exactly what the wind farm will look like in reality due to factors such as: different lighting, weather and seasonal conditions which vary through time and the resolution of the image;
- The images provided give a reasonable impression of the scale of the turbines and the distance to the turbines, but can never be 100% accurate;
- A static image cannot convey turbine movement, or flicker or reflection from the sun on the turbine blades as they move;
- The viewpoints illustrated are representative of views in the area, but cannot represent visibility at all locations;
- To form the best impression of the impacts of the wind farm proposal these images are best viewed at the viewpoint location shown;
- The images must be printed at the right size to be viewed properly (260mm by 820mm);
- You should hold the images flat at a comfortable arm's length. If viewing these images on a wall or board at an exhibition, you should stand at arm's length from the image presented.
- The ZTV presented here takes no account of the screening effects of vegetation or buildings.

Additional notes:

1. This figure has been based on the following parameters:
Turbine layout file: LTRECELYN001.WFL
• Hub height: 84.5m
• Rotor diameter: 117m
• Height to blade tip: 143m
2. Turbine positions could be subject to micro-siting (typically up to 50m).
3. Direction given as bearing relative to Grid North (BNG).
4. The number of turbine blades and hubs theoretically visible is counted from the wireframe in sets of 3 and ignores the screening effects of any intervening objects and forestry.
5. This figure is produced broadly in accordance with the Landscape Institute's Technical Guidance Note 6/19 (Type 4 Visualisation).

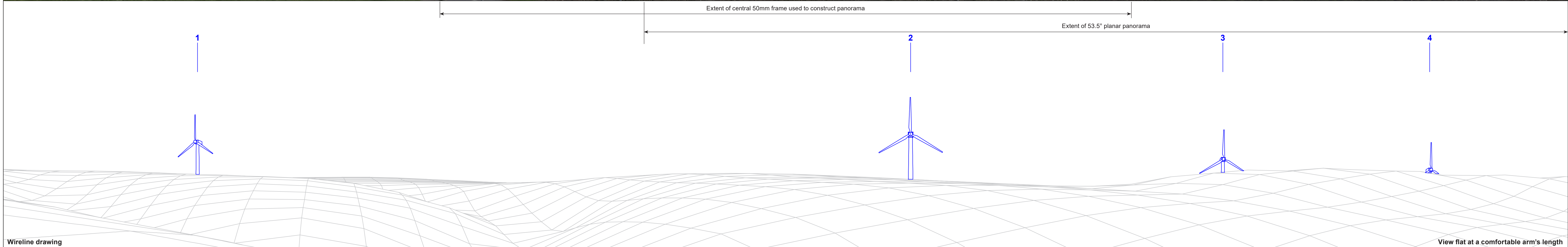
Client

Trecelyn Wind Farm
Landscape and Visual Impact Assessment

Figure 6.20a
Viewpoint 2: Old Pant Road, Pantside

October 2023

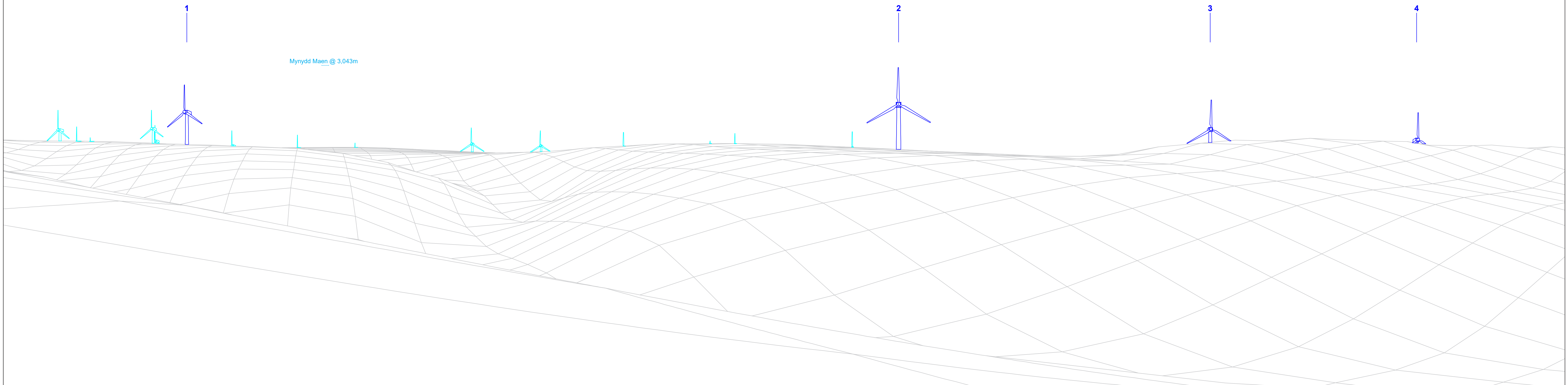




Wind Farm Key: Trecelyn Wind Farm	OS reference:	E321 975, N197 866	Horizontal field of view:	90° (cylindrical projection)	Camera:	Canon EOS 5D Mark II	Client	Trecelyn Wind Farm Landscape and Visual Impact Assessment	Figure 6.20b Viewpoint 2: Old Pant Road, Panside	
	Eye level:	241.5m AOD	Principal distance:	522mm	Lens:	50mm (Canon 50mm f/1.2 GM)				
	Direction of view:	149°	Paper size:	841mm x 297mm (half A1)	Camera height:	1.5m AGL				
	Nearest turbine:	1,523m	Correct printed image size:	820 x 130mm	Date and time:	04/05/2023 11:26				

C:\Users\UKLE75\OneDrive - WSP\03651Temp\Windfarm\Trecelyn\Design\VP2_Old Pant Road\Road_807379_WOOD-FG-01-00037_Rt.mxd
Originator: bryc

Southeast View



Wireline drawing

View flat at a comfortable arm's length

Wind Farm Key: Trecelyn Wind Farm Existing Consented Application Scoping

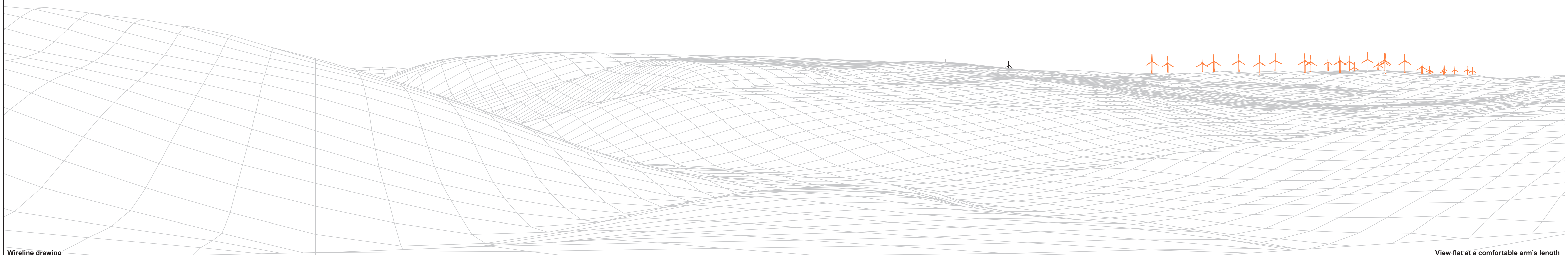
OS reference:	E321 975, N197 866	Horizontal field of view:	90° (cylindrical projection)	Camera:	Canon EOS 5D Mark II
Eye level:	241.5m AOD	Principal distance:	522mm	Lens:	50mm (Canon 50mm f/1.2 GM)
Direction of view:	149°	Paper size:	841mm x 297mm (half A1)	Camera height:	1.5m AGL
Nearest turbine:	1,523m	Correct printed image size:	820 x 130mm	Date and time:	04/05/2023 11:26

Client	Trecelyn Wind Farm Landscape and Visual Impact Assessment	Figure 6.20c Viewpoint 2: Old Pant Road, Panside	October 2023	
--------	--	--	--------------	--

C:\Users\UKLE775\OneDrive - WSP\03651Temp\Windfarm\Trecelyn\Design\VP2_Old Pant Road_807379-WOOD-FG-OL-00037_Rt.mxd
Originator: bryc

Southwest View

C:\Users\UKLE775\OneDrive - WSP\OneDrive - WSP\03651Temp\Windfarm\Trecelyn\Design\WP2_Old Pant Road\807379-WOOD-FG-01-00037_Rt.indd



Wireline drawing

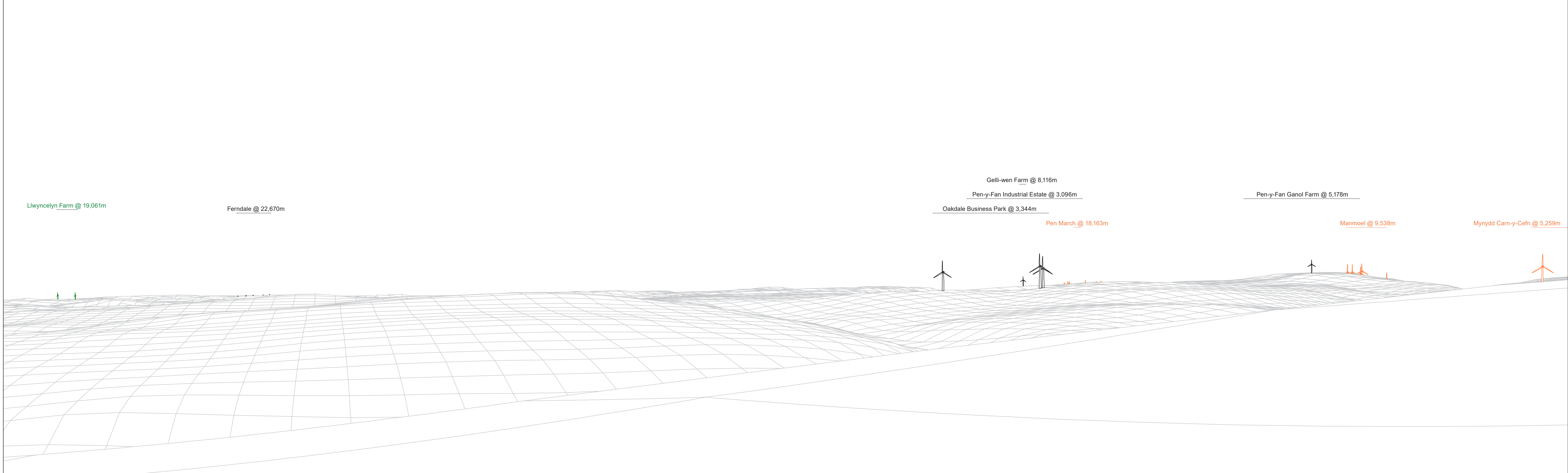
View flat at a comfortable arm's length

Wind Farm Key: Trecelyn Wind Farm Existing Consented Application Scoping

OS reference:	E321 975, N197 866	Horizontal field of view:	90° (cylindrical projection)	Camera:	Canon EOS 5D Mark II
Eye level:	241.5m AOD	Principal distance:	522mm	Lens:	50mm (Canon 50mm f/1.2 GM)
Direction of view:	149°	Paper size:	841mm x 297mm (half A1)	Camera height:	1.5m AGL
Nearest turbine:	1,523m	Correct printed image size:	820 x 130mm	Date and time:	04/05/2023 11:26

Client	Trecelyn Wind Farm Landscape and Visual Impact Assessment	Figure 6.20d Viewpoint 2: Old Pant Road, Panside	October 2023	
--------	--	--	--------------	--

Northwest View



Wireline drawing

View flat at a comfortable arm's length

Wind Farm Key: Trecelyn Wind Farm Existing Consented Application Scoping

OS reference:	E321 975, N197 866	Horizontal field of view:	90° (cylindrical projection)	Camera:	Canon EOS 5D Mark II
Eye level:	241.5m AOD	Principal distance:	522mm	Lens:	50mm (Canon 50mm f/1.2 GM)
Direction of view:	149°	Paper size:	841mm x 297mm (half A1)	Camera height:	1.5m AGL
Nearest turbine:	1,523m	Correct printed image size:	820 x 130mm	Date and time:	04/05/2023 11:26

Client

Trecelyn Wind Farm
Landscape and Visual Impact Assessment

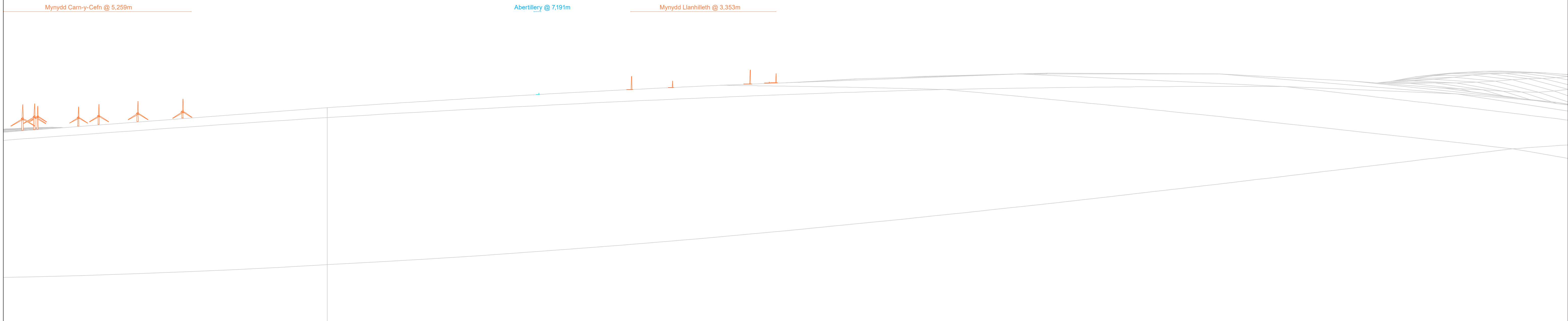
Figure 6.20e
Viewpoint 2: Old Pant Road, Pantside

October 2023



C:\Users\UKCLE775\OneDrive - WSP\03651Temp\Windfarm\Trecelyn\Design\WP2_Old Pant Road\807378-WOOD-FG-OL-00037_Rt_1.mxd
Originator: bryc

Northeast View



Wireline drawing

Wind Farm Key: Trecelyn Wind Farm Existing Consented Application Scoping

OS reference:	E321 975, N197 866	Horizontal field of view:	90° (cylindrical projection)	Camera:	Canon EOS 5D Mark II
Eye level:	241.5m AOD	Principal distance:	522mm	Lens:	50mm (Canon 50mm f/1.2 GM)
Direction of view:	149°	Paper size:	841mm x 297mm (half A1)	Camera height:	1.5m AGL
Nearest turbine:	1,523m	Correct printed image size:	820 x 130mm	Date and time:	04/05/2023 11:26

Client

Trecelyn Wind Farm
Landscape and Visual Impact Assessment

Figure 6.20f
Viewpoint 2: Old Pant Road, Pantside

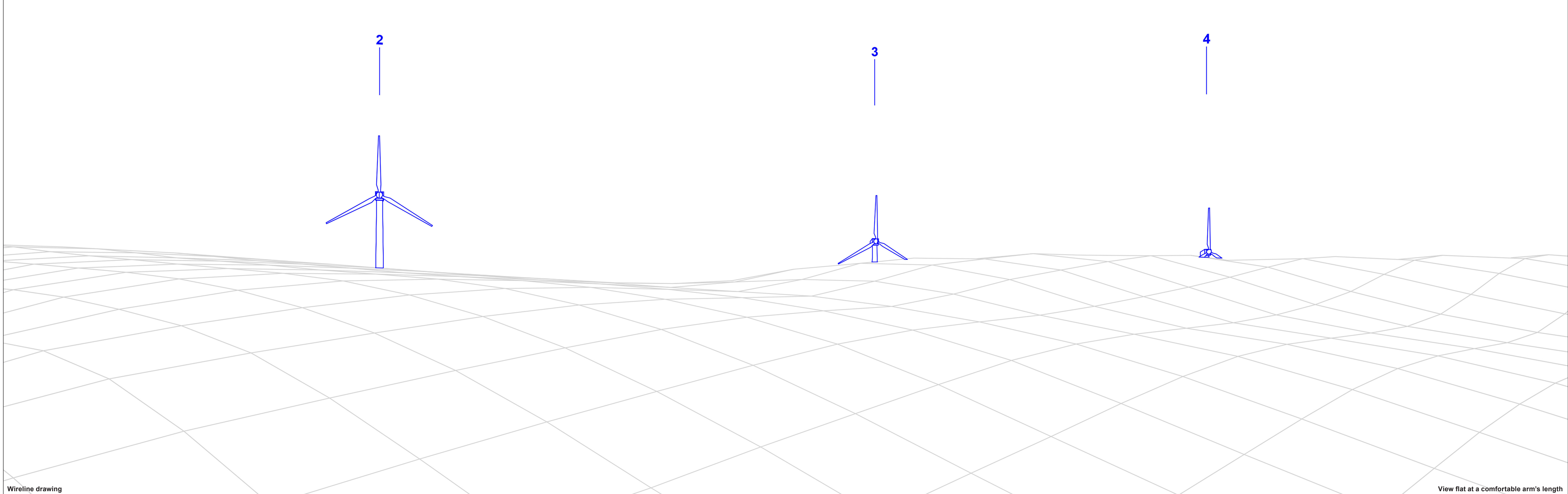
October 2023



View flat at a comfortable arm's length

C:\Users\UKLE775\OneDrive - WSP\03651Temp\Windfarm\Trecelyn\Design\VP2_Old Pant Road\807379-WOOD-FG-OL-00037_Rt.mxd
Originator: bryc

C:\Users\UKLE175\OneDrive - WSP\03651Temp\Windfarm\Trecelyn\Design\VP2_Old Pant Road\807379-WOOD-FG-OL-00037_Rt.lind



Wireline drawing

View flat at a comfortable arm's length

Wind Farm Key:  Trecelyn Wind Farm

OS reference:	E321 975, N197 866	Horizontal field of view:	53.5° (planar projection)	Camera:	Canon EOS 5D Mark II
Eye level:	241.5m AOD	Principal distance:	812.5mm	Lens:	50mm (Canon 50mm f/1.2 GM)
Direction of view:	149°	Paper size:	841mm x 297mm (half A1)	Camera height:	1.5m AGL
Nearest turbine:	1,523m	Correct printed image size:	820 x 260mm	Date and time:	04/05/2023 11:26

Client

Trecelyn Wind Farm
Landscape and Visual Impact Assessment

Figure 6.20g
Viewpoint 2: Old Pant Road, Pantside

October 2023



C:\Users\UKLE75\OneDrive - WSP\03651Temp\Windfarm\Trecelyn\Design\WP2 Old Pant Road\807379-WOOD-FG-01-00037_Rt.indd Originator: byec



Photomontage

View flat at a comfortable arm's length

OS reference:	E321 975, N197 866	Horizontal field of view:	53.5° (planar projection)	Camera:	Canon EOS 5D Mark II
Eye level:	241.5m AOD	Principal distance:	812.5mm	Lens:	50mm (Canon 50mm f/1.2 GM)
Direction of view:	149°	Paper size:	841mm x 297mm (half A1)	Camera height:	1.5m AGL
Nearest turbine:	1,523m	Correct printed image size:	820 x 260mm	Date and time:	04/05/2023 11:26

Client

Trecelyn Wind Farm
Landscape and Visual Impact Assessment

Figure 6.20h
Viewpoint 2: Old Pant Road, Panside

October 2023



C:\Users\UKLE175\OneDrive - WSP\03651Temp\Windfarm\Trecelyn\Design\WP2 Old Pant Road\Road 807379-WOOD-FG-01-00037_Rt.mxd
Originator: bryce



Photomontage

View flat at a comfortable arm's length

OS reference:	E321 975, N197 866	Horizontal field of view:	90° (cylindrical projection)	Camera:	Canon EOS 5D Mark II
Eye level:	241.5m AOD	Principal distance:	522mm	Lens:	50mm (Canon 50mm f/1.2 GM)
Direction of view:	149°	Paper size:	841mm x 297mm (half A1)	Camera height:	1.5m AGL
Nearest turbine:	1,523m	Correct printed image size:	820 x 130mm	Date and time:	04/05/2023 11:26

Client

Trecelyn Wind Farm
Landscape and Visual Impact Assessment

Figure 6.201
Viewpoint 2: Old Pant Road, Pantside

October 2023

